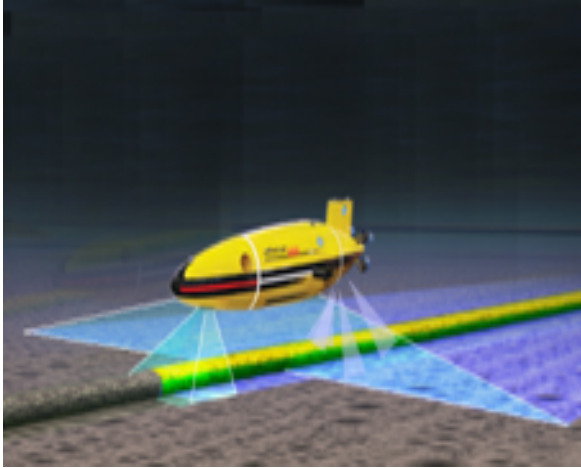


CS-AUV SERVICES: SURVEY CONSTRUCTION SUPPORT AUV

AUV - Survey Construction Support – Pre-survey – TDP Monitoring – As-built Survey
IMR Pipeline inspection



For more than 33 years, ADVANCED SUBSEA's founders have been deeply involved in Marine Technological Innovation, extrapolating new tools from existing proven innovations and combining external and in-house competence and expertise.

CS-AUV is a Survey Support service based on ALISTAR 3000, developed by ECA.

CS-AUV is an innovative tool for the next decade. This Service is the result of the cooperation of ECA SA, company specialized in Defence & Marine Robotics (ROV, AUV) and ADVANCED SUBSEA SAS, specialized in Survey Construction Support.

CS-AUV service is dedicated to Oil Companies, Field development Contractors, Construction Support Subcontractors.

1- CONSTRUCTION SUPPORT AUV

CS-AUV service allows to deal with Survey construction support tasks in relation with Deep Water field development by J-Lay/ Steep-S barges and medium shallow developments (100 to 400 m) S-lay barges (SURF Contract).

CS-AUV service allows to perform, from the Construction vessel/ barge or from a standard support vessel, all survey Construction Support tasks which are currently carried out from a DP2 Construction Support Vessel. This tool with an high autonomy and large radius of action, will not replace Barge Construction ROVs, CS-AUV will **save time** of DP2 Construction Support Vessel, thus saving a large amount of money.

2- AUV CONSTRUCTION SUPPORT SERVICES

On the base of ALISTAR 3000, a proven Deep Water Survey AUV, able to track and follow sealine, locate, identify a subsea structure, then perform a detailed inspection, This service includes to complete complex tasks using all existing sensors, control routines and logical functions, such as Inertial and Acoustic Navigation, automatic pipe tracking, automatic station keeping,...

This AUV-based Survey Construction Support Service, will allow to perform most of the tasks of Survey Construction Support :

- Flowlines routes Pre-survey,
- Existing Obstacle and Subsea structure Inspection,
- Touch-down-point monitoring for flowlines,
- As-laid/ As-built survey of flowlines and umbilicals,
- As-built of subsea structures,
- CP Survey and pipeline inspection.

3- ADVANCED SUBSEA References

- * Management of Construction Support for J-Lay Vessel SAIBOS FDS (SAIBOS 2000/ 2002)
- * Management of Construction Support for DLV CASTORO 8 (SAIBOS 1995/ 2002)
- * Management of Construction Support for TOTAL E&P : DALIA, MOHO, AKPO, USAN
- * DeepWater Positioning & Survey Expertise Services and Method Development for TOTAL

Your contact : Jacques Schoellkopf
tel : 33(0)1 42 22 11 76 Email :jsk@advanced-subsea.com